



# ORGANIZATIONAL CHART & TELEPHONE DIRECTORY

This directory is designed to:

1. Give users direct access to the Department's top-level management and supervisory personnel, and
2. To see where the managers and supervisors fit into the Department's chain-of-command structure.

FOR AUTOMATED INSPECTION REQUESTS ONLY,  
YOU MAY CALL TOLL FREE FROM ANYWHERE  
IN LOS ANGELES COUNTY:

**1-888-LA-4-BUILD**

OR

OUTSIDE LOS ANGELES COUNTY

213-482-0000

FOR ALL OTHER SERVICES OR INFORMATION WITHIN  
THE CITY OF LOS ANGELES

**3-1-1**

OR

OUTSIDE LOS ANGELES CITY

1-213-473-3231

*For more information regarding the Los Angeles Department of Building and Safety, please visit [www.ladbs.org](http://www.ladbs.org).*



LADBS ADMINISTRATIVE/HEADQUARTER OFFICES  
201 NORTH FIGUEROA STREET, SUITE 1000  
LOS ANGELES, CALIFORNIA 90012

**PERMIT ISSUING/DEVELOPMENT SERVICES/INSPECTION OFFICES**

- DEVELOPMENT SERVICES CASE MANAGEMENT OFFICE  
201 N. Figueroa Street, 10<sup>th</sup> Floor  
Los Angeles, CA 90012
- METRO DEVELOPMENT SERVICES CENTER  
201 N. Figueroa Street  
Los Angeles, CA 90012  
Records Research and Express Permits – 1<sup>st</sup> Floor  
Plan Check – 4<sup>th</sup> Floor
- VAN NUYS DEVELOPMENT SERVICES CENTER  
6262 Van Nuys Boulevard, 2<sup>nd</sup> Floor  
Van Nuys, CA 91401
- WEST LOS ANGELES DEVELOPMENT SERVICES CENTER  
1828 Sawtelle Boulevard, 2<sup>nd</sup> Floor  
Los Angeles, CA 90025
- SAN PEDRO DEVELOPMENT SERVICES CENTER  
638 S. Beacon Street, 2<sup>nd</sup> Floor  
San Pedro, CA 90731
- SOUTH LOS ANGELES DEVELOPMENT SERVICES CENTER  
8475 S. Vermont Avenue, 2<sup>nd</sup> Floor  
Los Angeles, CA 90044

**OTHER INSPECTION AND CODE ENFORCEMENT OFFICES**

- 221 N. Figueroa Street, 4<sup>th</sup> & 6<sup>th</sup> Floors  
Los Angeles, CA 90012
- 3550 Wilshire Boulevard, #1800  
Los Angeles, CA 90010
- 11620 Wilshire Boulevard, #1100  
Los Angeles, CA 90025
- 7166 Manchester Avenue, #10B  
Los Angeles, CA 90045
- 19040 Vanowen Street  
Reseda, CA 91335
- Van Nuys City Hall  
14410 Sylvan Street  
Van Nuys, CA 91401
- 2319 Dorris Place (Test Lab)  
Los Angeles, CA 90031

# TELEPHONE DIRECTORY INDEX

## DEPARTMENT OF BUILDING & SAFETY

Executive and Bureau Management..... Chart 1

## PERMIT AND ENGINEERING BUREAU

Structural Plan Check Division..... Chart 2

Metro Plan Check

Van Nuys District Office

South LA District Office

West LA District Office

San Pedro District Office

Green/Electrical/Mechanical (GEM) Plan Check Division..... Chart 3

Green Building Plan Check / Inspection

Mechanical Plan Check & Test Lab

Electrical Plan Check & Test Lab

## INSPECTION BUREAU

Commercial Inspection ..... Chart 4

Building / Plumbing, Heating & Fire Sprinkler /

Electrical / Elevator & Pressure Vessel

Residential Inspection..... Chart 5

Metro / Van Nuys / West LA

Grading Engineering & Inspection ..... Chart 5

Training & Emergency Management Division ..... Chart 5

## CODE ENFORCEMENT BUREAU

Specialty Inspection & Vacant Building Abatement..... Chart 6

General Enforcement & Annual Inspection Monitoring ..... Chart 6

Environmental Affairs Division Local Enforcement Agency..... Chart 6

## RESOURCE MANAGEMENT BUREAU

Administrative Services Division ..... Chart 7

General Analysis and Budget Services

Financial Services

Personnel Services

Risk & Records Management

## TECHNOLOGY SERVICES BUREAU

Project Management..... Chart 8

Application Services..... Chart 8

Operations and Infrastructure ..... Chart 8

BuildLA Office ..... Chart 8

## DEVELOPMENT SERVICES CASE MANAGEMENT

Zoning Engineer ..... Chart 9

Preliminary Review

Subdivision Unit

Case Management ..... Chart 9

Case Management

Concierge Services

**RAYMOND S. CHAN, C.E., S.E.**  
**GENERAL MANAGER**  
(213) 482-6800  
raymond.chan@lacity.org

**SPECIAL INVESTIGATOR\***  
**STEVE DAVEY**  
(213) 482-6867  
steve.davey@lacity.org

**DEVELOPMENT SERVICES/  
CASE MANAGEMENT**  
**LINCOLN LEE, Chief**  
(213) 482-6864  
lincoln.lee@lacity.org  
(See Chart 9)

**EXECUTIVE OFFICER**  
**FRANK BUSH**  
(213) 482-6800  
frank.bush@lacity.org

**MANAGEMENT ASSISTANCE**  
**KAREN PENERA**      **CATHERINE NUEZCA GABA**  
Special Assistant      Bldg Civil Engr I  
(213) 482-6749      (213) 482-0435  
karen.penera@lacity.org      catherine.nuezcagaba@lacity.org

**PERMIT AND ENGINEERING BUREAU**  
**IFA KASHEFI, Chief**  
(213) 482-0440  
ifa.kashefi@lacity.org  
(See Charts 2 & 3)

**RESOURCE MANAGEMENT BUREAU**  
**STEVE ONGELE, Chief**  
(213) 482-6703  
steve.ongele@lacity.org  
(See Chart 7)

**INSPECTION BUREAU**  
**LARRY GALSTIAN, Chief**  
(213) 252-3904  
larry.galstian@lacity.org  
(See Charts 4 & 5)

**CODE ENFORCEMENT BUREAU**  
**LARRY GALSTIAN, Chief**  
(213) 252-3904  
larry.galstian@lacity.org  
(See Chart 6)

**TECHNOLOGY SERVICES BUREAU**  
**GIOVANI DACUMOS, Chief**  
(213) 482-0001  
giovani.dacumos@lacity.org  
(See Chart 8)

\* Personnel Department employee assigned to LADBS, reports to Raymond S. Chan, and reports to David Luther, Interim General Manager, Personnel Department.

**PERMIT AND ENGINEERING BUREAU**

**IFA KASHEFI, Chief**

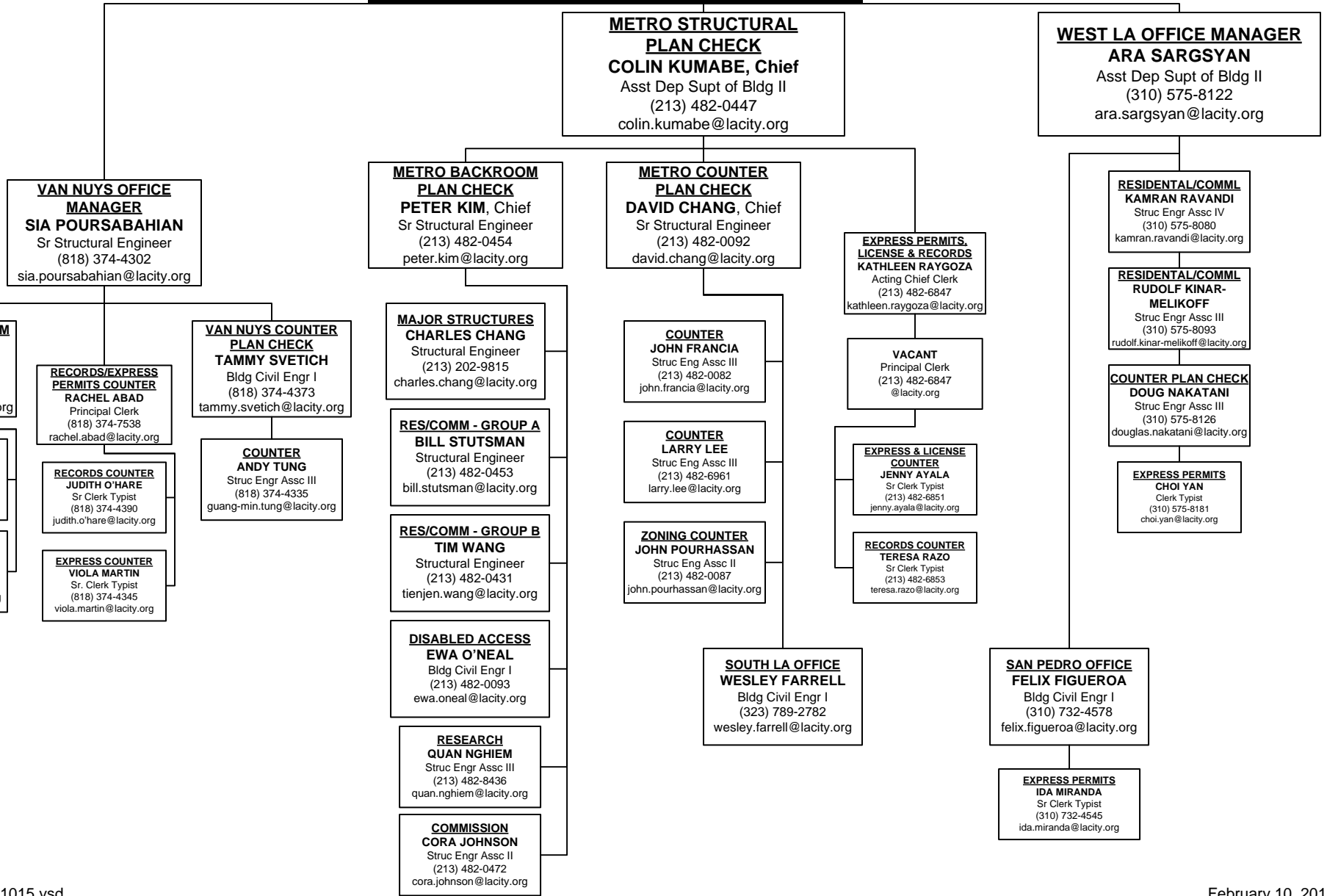
(213) 482-0440

ifa.kashefi@lacity.org

**KEN GILL, Assistant Chief**

(213) 482-0440

ken.gill@lacity.org



**PERMIT AND ENGINEERING BUREAU**

**IFA KASHEFI, Chief**

(213) 482-0440

ifa.kashefi@lacity.org

**KEN GILL, Assistant Chief**

(213) 482-0440

ken.gill@lacity.org

**GREEN/ELECTRICAL/MECHANICAL  
PLAN CHECK**

**OSAMA YOUNAN, Chief**

Asst Dep Supt Bldg II

(213) 482-7407

osama.younan@lacity.org

**MECHANICAL PLAN CHECK**

**DOMENICO BARBATO**

Bldg Mech Engr II

(213) 482-0410

domenico.barbato@lacity.org

**ELECTRICAL PLAN CHECK**

**BEHZAD EGHTEASADY**

Bldg Elec Engr II

(213) 482-7309

behzad.eghtesady@lacity.org

**GREEN BUILDING**

**SYED ALI**

Bldg Civil Engr I

(213) 202-3450

syed.ali@lacity.org

**METRO MECHANICAL  
PLAN CHECK BACKROOM**

**ADEL SALAH-EDDINE**

Bldg Mech Engr I

(213) 482-0053

adel.salah-eddine@lacity.org

**VAN NUYS MECHANICAL  
PLAN CHECK & COUNTER**

**ADEL SALAH-EDDINE**

Bldg Mech Engr I

(213) 482-0053

adel.salah-eddine@lacity.org

**METRO ELECTRICAL  
PLAN CHECK BACKROOM**

**NABIL MAALOUF**

Bldg Elec Engr I

(213) 482-0052

nabil.maalouf@lacity.org

**VAN NUYS ELECTRICAL  
PLAN CHECK & COUNTER**

**ELIE MAALOUF**

Bldg Elec Engr I

(818) 374-4343

elie.maalouf@lacity.org

**METRO  
ALDO UBAU**

Struc Engr Assc III

(213) 482-0413

aldo.ubau@lacity.org

**VAN NUYS  
SCOTT AYERS**

Struc Engr Assc III

(818) 374-4308

michaelscott.ayers@lacity.org

**METRO MECHANICAL  
PLAN CHECK COUNTER**

**MIKE SHAHRESTANI**

Mech Eng Assc IV

(213) 482-6940

mike.shahrestani@lacity.org

**METRO ELECTRICAL  
PLAN CHECK COUNTER**

**MEHDI ZANDI**

Elec Eng Assc III

(213) 482-7114

mehdi.zandi@lacity.org

**INSPECTION SUPERVISOR  
RUSSELL KELLY**

Sr Bldg Mech Inspector

(213) 202-3472

russell.kelly@lacity.org

**WEST L.A.  
RICHARD GARCIA**

Struc Engr Assc II

(310) 575-8029

richard.garcia@lacity.org

**MECHANICAL TEST LAB  
MANUEL HERNANDEZ**

Mech Eng Assc II

(213) 482-0458

manuel.hernandez@lacity.org

**ELECTRICAL TEST LAB  
BEHROOZ HOORIANI**

Elec Eng Assc III

(323) 224-2168

behrooz.hooriani@lacity.org

**INSPECTION BUREAU**  
**LARRY GALSTIAN, Chief**  
 (213) 252-3904  
 larry.galstian@lacity.org  
**DAVID LARA, Assistant Chief**  
 (213) 252-3902  
 david.lara@lacity.org

**RESTAURANT HOSPITALITY EXPRESS PROGRAM (RHEP) AND INSPECTION CASE MANAGEMENT (ICM)**  
**JOHN WEIGHT**  
 Acting Principal Inspector  
 (213) 202-9963  
 John.weight@lacity.org

**RHEP/ICM ADMINISTRATIVE SUPPORT**  
 (213) 482-0464/202-9840  
 Fax (213) 482-0303

**BUILDING INSPECTION**  
**TODD BORZI, Chief**  
 Chief Inspector  
 (213) 482-0342  
 todd.borzi@lacity.org

**SPECIAL EVENTS/TENT INSPECTIONS**  
**RICHARD FORTMAN**  
 Principal Inspector  
 (213) 482-7097  
 richard.fortman@lacity.org

**MATERIALS CONTROL**  
**RICHARD FORTMAN**  
 Principal Inspector  
 (213) 482-7097  
 richard.fortman@lacity.org

**HIGH RISE RETROFIT/ EQ INSPECTION**  
**JOHN KELLY**  
 Senior Build Inspector  
 (213) 482-0392  
 john.kelly@lacity.org

**METRO/WLA/SP INVESTIGATIONS**  
**JOHN KELLY**  
 Senior Build Inspector  
 (213) 482-0392  
 john.kelly@lacity.org

**VAN NUYS INVESTIGATIONS**  
**RICK RODRIGUEZ**  
 Building Inspector  
 (213) 482-0345  
 rick.rodriguez@lacity.org

**CERTIFIED LICENSED CONTRACTOR (CLC)**  
**RICK RODRIGUEZ**  
 Building Inspector  
 (213) 482-0345  
 rick.rodriguez@lacity.org

**METRO**  
**ANDREW CROMER**  
 Principal Inspector  
 (213) 482-0309  
 andrew.cromer@lacity.org

**VAN NUYS**  
**JIM GARRISON**  
 Senior Build Inspector  
 (818) 374-1128  
 jim.garrison@lacity.org

**WEST LA**  
**RICKEY JACKSON**  
 Senior Build Inspector  
 (310) 914-3917  
 rickey.jackson@lacity.org

**SAN PEDRO**  
**DAVID TSAU**  
 Senior Build Inspector  
 (310) 732-4553  
 david.tsau@lacity.org

**PLUMBING/HEATING AND FIRE SPRINKLER INSPECTION**  
**BRADLEY NEIGHBORS, Chief**  
 Chief Inspector  
 (213) 482-6787  
 bradley.neighbors@lacity.org

**PLUMBING/HEATING/FIRE SPRINKLER INSPECTION**  
**MARK CASEY**  
 Principal Inspector  
 (213) 482-0356  
 mark.casey@lacity.org

**METRO**  
**RUSS ITO, Sr. Plumbing**  
 (213) 482-0351 - russ.ito@lacity.org  
**JOE TAYLOR, Sr. Fire Sprinkler**  
 (213) 482-0344 - joseph.taylor@lacity.org  
**DENVER (SHAWN) HARGIS, Sr. HVAC**  
 (213) 482-0354 - denver.hargis@lacity.org

**VAN NUYS**  
**CORNELL EWELL, Sr. Plumbing**  
 (818) 374-1154 - cornell.ewell@lacity.org  
**JOHN BARTON, Sr. Fire Sprinkler**  
 (818) 374-1142 - john.barton@lacity.org  
**MIKE MCLAY, Sr. HVAC**  
 (818) 374-1153 - michael.mclay@lacity.org

**WEST LA**  
**JESSE BARBOZA, Sr. Plumbing**  
 (310) 914-3949 - jesse.barboza@lacity.org  
**DANIEL SANCHEZ, Sr. Fire Sprinkler**  
 (310) 914-3955 - daniel.sanchez@lacity.org  
**STEVE PALCHANIS, Sr. HVAC**  
 (310) 914-3961 - steve.palchanis@lacity.org

**SAN PEDRO**  
**STEVE BELTRAN**  
 Build Mech Inspector  
 (310) 732-4546  
 steve.beltran@lacity.org

**PLUMBING INFORMATION**  
 (213) 482-0061  
 Fax (213) 482-0331

**ELECTRICAL INSPECTION**  
**VACANT, Chief**  
 Chief Inspector  
 (213) 482-0341  
 @lacity.org

**ELECTRICAL INSPECTION**  
**DAVID MACLEAN**  
 Principal Inspector  
 (213) 482-0377  
 david.maclean@lacity.org

**METRO**  
**EDWARD ZAVALA**  
 Sr Electrical Inspector  
 (213) 202-9905  
 ed.zavala@lacity.org

**VAN NUYS**  
**RICK HORN**  
 Sr Electrical Inspector  
 (818) 374-1106  
 richard.horn@lacity.org

**WEST LA**  
**RAY LEWIS**  
 Sr Electrical Inspector  
 (310) 914-3940  
 ray.lewis@lacity.org

**SAN PEDRO**  
**MIKE PACKARD**  
 Sr Electrical Inspector  
 (310) 732-4549  
 michael.packard@lacity.org

**ELECTRICAL INFORMATION PUBLIC COUNTER**  
**EDWARD ZAVALA**  
 Sr Electrical Inspector  
 (213) 482-0057  
 ed.zavala@lacity.org

**ELEVATOR/ PRESSURE VESSEL INSPECTION**  
**PETER CALLAS, Chief**  
 Chief Inspector  
 (213) 202-9831  
 peter.callas@lacity.org

**ELEVATOR INSPECTION**  
**BARRY FRIESEN**  
 Principal Inspector  
 (213) 202-9830  
 barry.friesen@lacity.org

**ELEVATOR INSPECTION VN**  
**ANTONIO MARINI**  
 Sr Safety Eng Elev  
 (818) 374-1147  
 antonio.marini@lacity.org

**ELEVATOR INSPECTION WLA**  
**LARRY ISIDRO**  
 Sr Safety Eng Elev  
 (310) 914-3970  
 larry.isidro@lacity.org

**PRESSURE VESSEL INSPECTION CODE DESK VN**  
**WILLIAM BAYNTON**  
 Sr Safety Eng Press Ves  
 (818) 374-1149  
 william.baynton@lacity.org

**PRESSURE VESSEL INSPECTION CODE DESK WLA**  
**RENATO FABIAN**  
 Sr Safety Eng Press Ves  
 (310) 914-3973  
 renato.fabian@lacity.org

**ELEVATOR CODE INFORMATION & APPOINTMENTS**  
 (213) 202-9844  
 Fax (213) 202-9922

**PRESSURE VESSEL INSPECTION CODE DESK METRO**  
**CIRILO REYES**  
 Safety Eng. Press. Vessel  
 (213) 202-9852  
 cirilo.reyes@lacity.org

**INSPECTION BUREAU**  
**LARRY GALSTIAN, Chief**  
 (213) 252-3904  
 larry.galstian@lacity.org  
**DAVID LARA, Assistant Chief**  
 (213) 252-3902  
 david.lara@lacity.org

**RESIDENTIAL INSPECTION**  
**MICHAEL THARPE, Chief**  
 Chief Inspector  
 (213) 482-0338  
 michael.tharpe@lacity.org

**GRADING**  
**PASCAL CHALLITA, Chief**  
 Geotechnical Engineer III  
 (213) 482-0492  
 pascal.challita@lacity.org

**TRAINING AND EMERGENCY MANAGEMENT**  
**LUKE ZAMPERINI, Chief**  
 Chief Inspector  
 (213) 202-9859 or (213) 482-6788  
 luke.zamperini@lacity.org

**METRO/SAN PEDRO**  
**CHERYL CHISOLM**  
 Principal Inspector  
 (213) 252-3068  
 cheryl.chisolm@lacity.org

**VAN NUYS**  
**PRESTON MEYER**  
 Principal Inspector  
 (818) 374-1155  
 preston.meyer@lacity.org

**WLA**  
**JEFF NAPIER**  
 Principal Inspector  
 (818) 914-3904  
 jeff.napier@lacity.org

**METRO INSPECTION**  
**MICHAEL MARTIN**  
 Principal Inspector  
 (213) 482-0397  
 michael.martin@lacity.org

**GEOTECHNICAL ENGINEERING**  
**ADOLFO ACOSTA**  
 Geotechnical Engineer II  
 (213) 482-6967  
 jesus.acosta@lacity.org

**NANI PAXTON**  
 Management Analyst II  
 (213) 202-5410  
 naniii.paxton@lacity.org

**CD #4**  
 3550 Wilshire Blvd.  
**MIKE FAUNCE**  
 Sr Build Mech Inspector  
 (213) 252-3025  
 michael.faunce@lacity.org

**CD #2**  
 6262 Van Nuys Blvd.  
**TONY GIANNINI**  
 Sr Build Mech Inspector  
 (818) 374-1159  
 anthony.giannini@lacity.org

**CD #5D**  
 11620 Wilshire Blvd. #1100  
**DEVIN MYRICK**  
 Sr Build Mech Inspector  
 (818) 914-3909  
 ronald.myrick@lacity.org

**VAN NUYS INSPECTION**  
**JOE VELASQUEZ**  
 Sr Build Inspector  
 (818) 374-4355  
 joe.velasquez@lacity.org

**GRADING PLAN CHECK**  
**FRED WONG**  
 Struc Engr Assc IV  
 (213) 482-0491  
 fred.wong@lacity.org

**TRAINING**

**EMERGENCY MANAGEMENT**

**ELECTRICAL**  
**ED MITCHELL**  
 Sr Electrol Inspector  
 (213) 482-6797  
 edward.mitchell@lacity.org

**ED GARCIA**  
 Building Mech Inspector  
 (213) 482-6786  
 edward.garcia@lacity.org

**CD #8 & #9**  
 3550 Wilshire Blvd.  
**JAVIER ALIPIO**  
 Sr Build Mech Inspector  
 (213) 252-3369  
 javier.alipio@lacity.org

**CD #3**  
 19040 Vanowen St.  
**DAN STILES**  
 Sr Build Mech Inspector  
 (818) 774-4334  
 dan.stiles@lacity.org

**CD #11A**  
 11620 Wilshire Blvd. #1100  
**DANIEL ORRANTE**  
 Acting Sr Build Mech Inspector  
 (310) 914-3888  
 daniel.orrante@lacity.org

**WEST LA INSPECTION**  
**SERGIO VALENZUELA**  
 Sr Build Inspector  
 (310) 914-3934  
 sergio.valenzuela@lacity.org

**HVAC**  
**ANTHONY DE SANTIS**  
 Sr HVAC Inspector  
 (213) 482-6795  
 anthony.desantis@lacity.org

**CD #14A & #1**  
 3550 Wilshire Blvd.  
**DOMINIC DANERI**  
 Sr Build Mech Inspector  
 (213) 252-2819  
 dominic.daneri@lacity.org

**CD #12**  
 19040 Vanowen St.  
**PAUL CHOPP**  
 Sr Build Mech Inspector  
 (818) 774-4335  
 paul.chopp@lacity.org

**CD #11B**  
 11620 Wilshire Blvd. #1100  
**STEVE COTTON**  
 Sr Build Mech Inspector  
 (310) 914-3907  
 vincent.cotton@lacity.org

**SAN PEDRO INSPECTION**  
**AL GAMBLE**  
 Building Inspector  
 (310) 914-3937  
 al.gamble@lacity.org

**BUILDING**  
**JEFF BYTHEWAY**  
 Sr Build Inspector  
 (213) 482-6794  
 jeff.bytheway@lacity.org

**CD #5C**  
 3550 Wilshire Blvd.  
**RUBEN SALAS**  
 Acting Sr Build Mech Inspector  
 (213) 252-3075  
 ruben.salas@lacity.org

**CD #5B**  
 6262 Van Nuys Blvd.  
**VACANT**  
 Sr Build Mech Inspector  
 (818) 374-1157  
 @lacity.org

**CD #5A**  
 11620 Wilshire Blvd. #1100  
**ROGER WOODLAND**  
 Sr Build Mech Inspector  
 (310) 914-3906  
 roger.woodland@lacity.org

**PLUMBING**  
**LAURA BIGGIE**  
 Sr Plumbing Inspector  
 (213) 482-0346  
 Laura.biggie@lacity.org

**CD #10 & #13**  
 3550 Wilshire Blvd.  
**CHARLES BOGHOSKHAN**  
 Sr Build Mech Inspector  
 (213) 252-3067  
 charles.boghoskhan@lacity.org

**CD #7A**  
 6262 Van Nuys Blvd.  
**TONY GIANNINI**  
 Sr Build Mech Inspector  
 (818) 374-1159  
 anthony.giannini@lacity.org

**ASSISTANT INSPECTOR PROGRAM**  
**ARMOND GREGORYONA**  
 Sr Build Inspector  
 (213) 482-6783  
 armond.gregoryona@lacity.org

**CD #15**  
 638 S. Beacon  
**PAUL BECKER**  
 Sr Build Mech Inspector  
 (310) 732-4558  
 paul.becker@lacity.org



**CODE ENFORCEMENT BUREAU**

**LARRY GALSTIAN, Chief**  
 (213) 252-3904  
 larry.galstian@lacity.org  
**JOHN BIEZINS, Assistant Chief**  
 (213) 252-3310  
 john.biezins@lacity.org

**FAITH MAULUPE**  
 Principal Clerk  
 (213) 252-3376  
 faith.maulupe@lacity.org

**SPECIALTY/SIGNS INSPECTION & VACANT BUILDING ABATEMENT**  
**VACANT**  
 (213) 252-3310  
 @lacity.org

**GENERAL ENFORCEMENT & ANNUAL INSPECTION MONITORING**  
**KIM ARTHUR**  
 Chief Inspector  
 (213) 252-3909  
 kim.arthur@lacity.org

**ENVIRONMENTAL AFFAIRS DIVISION LOCAL ENFORCEMENT AGENCY**  
**DAVID THOMPSON, Program Manager**  
 Environmental Affairs Officer  
 (213) 252-3932  
 david.thompson@lacity.org

**SPECIALTY INSPECTION**  
**FRANK LARA**  
 Principal Inspector  
 (213) 252-3931  
 frank.lara@lacity.org

**SIGNS INSPECTION**  
**FRANK LARA**  
 Principal Inspector  
 (213) 252-3931  
 frank.lara@lacity.org

**ANNUAL INSPECTION MONITORING**  
**ERIC JAKEMAN**  
 Principal Inspector  
 (818) 374-9806  
 eric.jakeman@lacity.org

**NORTH REGION GENERAL ENFORCEMENT**  
**ERIC JAKEMAN**  
 Principal Inspector  
 (818) 374-9806  
 eric.jakeman@lacity.org

**CENTRAL REGION GENERAL ENFORCEMENT**  
**ANDREW LONGORIA**  
 Principal Inspector  
 (213) 252-3040  
 andrew.longoria@lacity.org

**SOUTH REGION GENERAL ENFORCEMENT**  
**ANDREW LONGORIA**  
 Principal Inspector  
 (213) 252-3040  
 andrew.longoria@lacity.org

**PERMITTING & INSPECTION**  
**JOSE GUTIERREZ**  
 Environmental Supervisor II  
 (213) 252-3348  
 jose.gutierrez@lacity.org

**ADMINISTRATION/HEALTH & SAFETY SUPPORT**  
**ANDY KAO**  
 Industrial Hygienist  
 (213) 252-3967  
 andy.kao@lacity.org

**PRO-ACTIVE CODE ENFORCEMENT**  
**GENE DIORIO**  
 Sr Build Inspector  
 (213) 252-3352  
 gene.diorio@lacity.org

**ENFORCEMENT**  
**DEAN STARON**  
 Sr Build Mech Inspector  
 (213) 252-3082  
 dean.staron@lacity.org

**NORTH REGION**  
**RENE DOMINGUEZ**  
 Sr Build Inspector  
 (818) 374-9837  
 rene.dominguez@lacity.org

**CD #2 & #7**  
**CRAIG DAVIS**  
 Sr Build Mech Inspector  
 (818) 374-9858  
 craig.davis@lacity.org

**CD #13**  
**MICHAEL COOPER**  
 Sr Build Mech Inspector  
 (213) 252-3393  
 michael.cooper@lacity.org

**CD #10**  
**TODD ROBERTSON**  
 Sr Build Mech Inspector  
 (213) 252-3964  
 todd.robertson@lacity.org

**PRO-ACTIVE CODE ENFORCEMENT**  
**TIM O'CONNOR**  
 Sr Build Mech Inspector  
 (213) 252-3349  
 timothy.oconnor@lacity.org

**NEW CONSTRUCTION**  
**DEAN STARON**  
 Sr Build Mech Inspector  
 (213) 252-3082  
 dean.staron@lacity.org

**CENTRAL REGION**  
**DOUG DEVINE**  
 Sr Build Inspector  
 (213) 252-3041  
 doug.devine@lacity.org

**CD #3 & #12**  
**JACK UPCHURCH**  
 Sr Build Mech Inspector  
 (818) 374-9853  
 jack.upchurch@lacity.org

**CD #4 & #5**  
**MATT KELLERMAN**  
 Sr Build Mech Inspector  
 (213) 252-3049  
 matt.kellerman@lacity.org

**CD #8 & #9**  
**HAL FULTZ**  
 Sr Build Mech Inspector  
 (323) 789-1484  
 hal.fultz@lacity.org

**VACANT BUILDING ABATEMENT**  
**ALEXANDER MOFFAT**  
 Sr Build Mech Inspector  
 (213) 252-3962  
 alexander.moffat@lacity.org

**OFF-SITE SIGNS PERIODIC INSPECTION PROGRAM**  
**DEAN STARON**  
 Sr Build Mech Inspector  
 (213) 252-3082  
 dean.staron@lacity.org

**SOUTH REGION**  
**DOUG DEVINE**  
 Sr Build Inspector  
 (213) 252-3041  
 doug.devine@lacity.org

**CD #6**  
**MARTIN WEIGHT**  
 Sr Build Mech Inspector  
 (818) 374-9820  
 martin.weight@lacity.org

**CD #1 & #14**  
**JAVIER LANDEROS**  
 Sr Build Mech Inspector  
 (213) 252-3038  
 javier.landeros@lacity.org

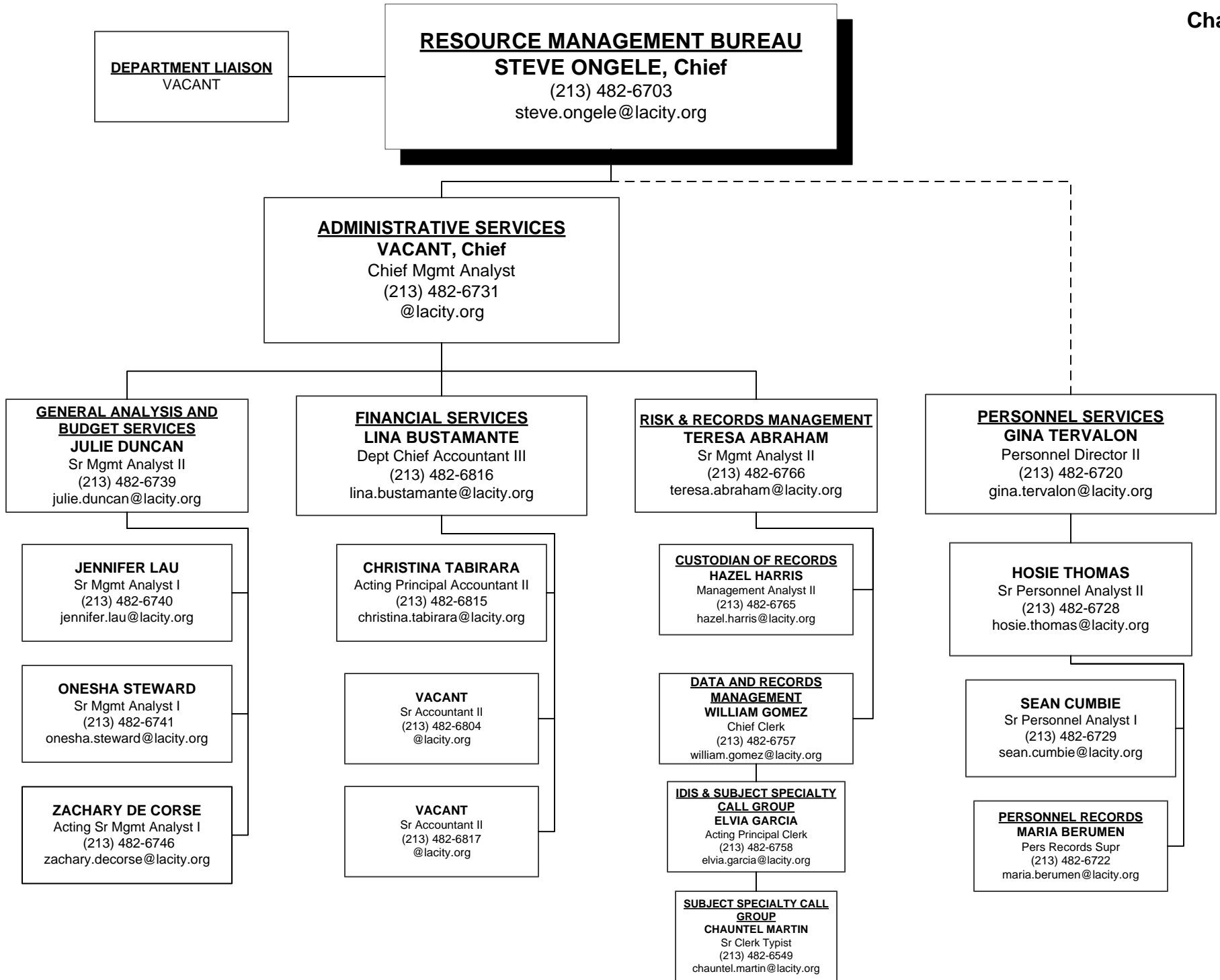
**CD #11**  
**MARSHALL RUMPF**  
 Sr Build Mech Inspector  
 (310) 417-8663  
 marshall.rumpf@lacity.org

**Legal Liaison**  
**VACANT**  
 Sr Build Mech Inspector  
 (818) 374-9859  
 @lacity.org

**Legal Liaison**  
**MICHAEL COOPER**  
 Sr Build Mech Inspector  
 (213) 252-3393  
 michael.cooper@lacity.org

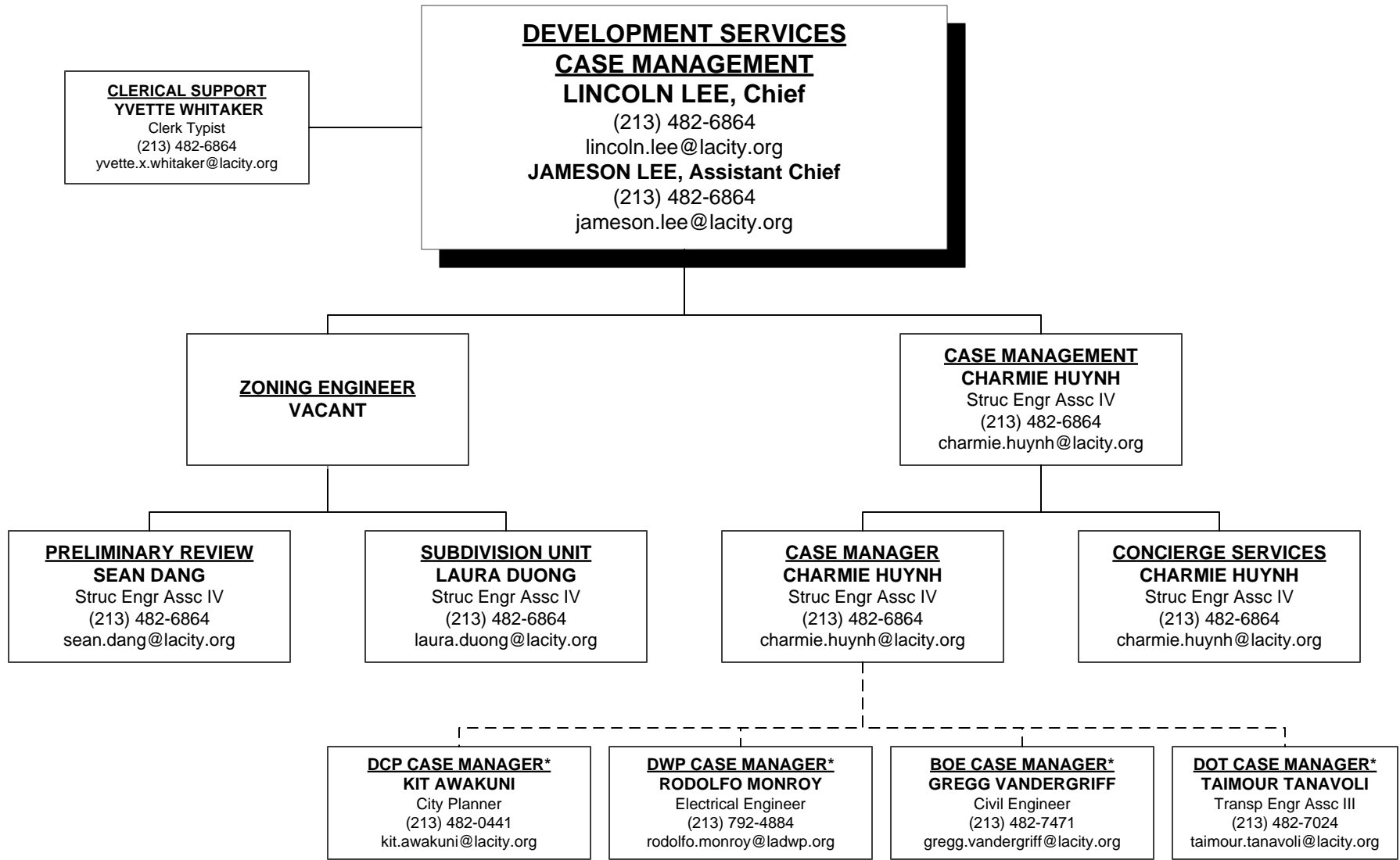
**CD #15**  
**VACANT**  
 Sr Build Mech Inspector  
 (310) 732-4530  
 @lacity.org

**Legal Liaison**  
**SAM PORTILLO**  
 Sr Build Mech Inspector  
 (323) 789-1489  
 sam.portillo@lacity.org



**TECHNOLOGY SERVICES BUREAU**  
**GIOVANI DACUMOS, Chief**  
(213) 482-6712  
giovani.dacumos@lacity.org  
**VACANT, Director of Systems**  
(213) 482-0001  
@lacity.org





\* Non-LADBS employees assigned to Development Services Case Management but report to their respective department management.